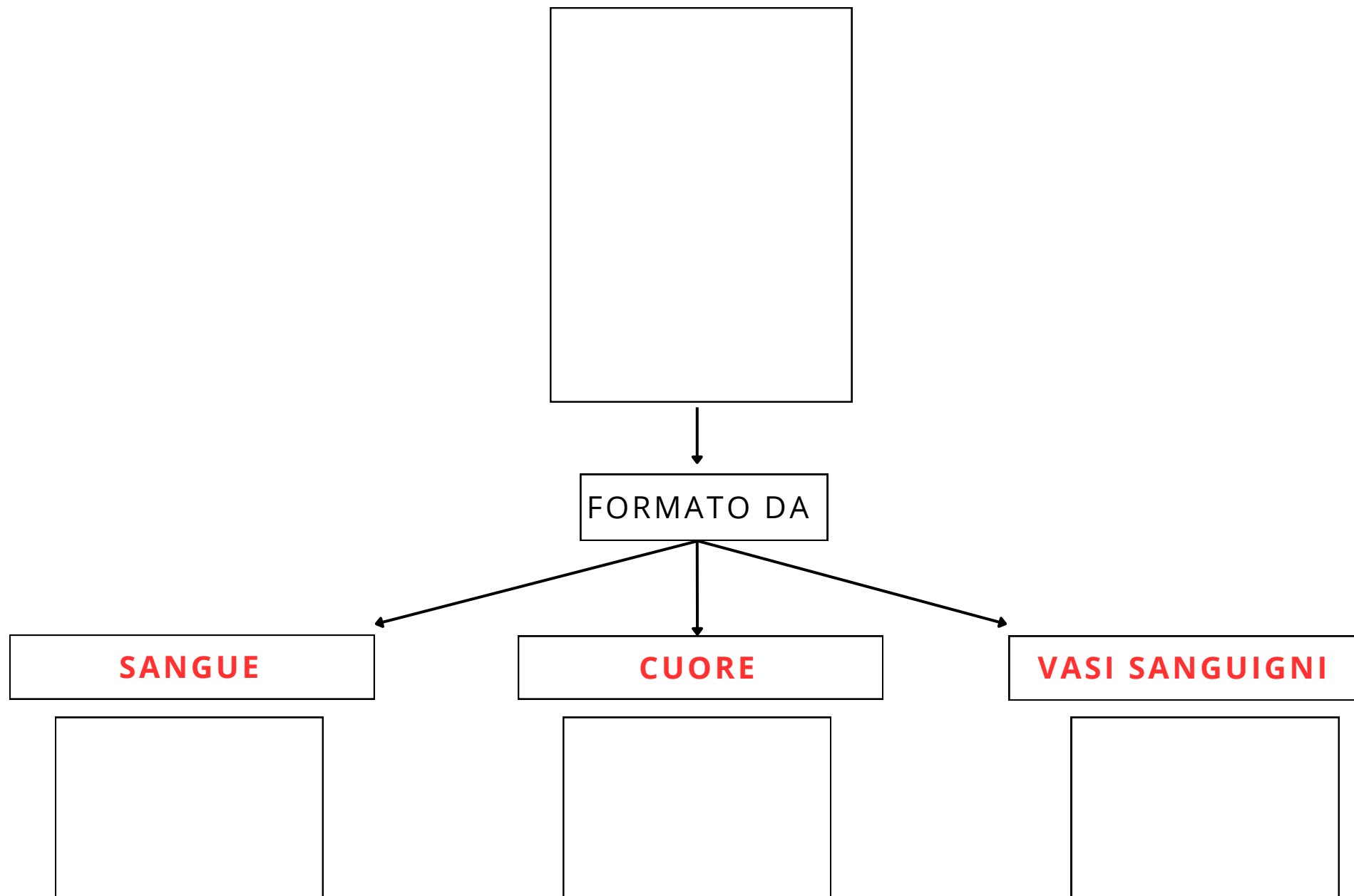
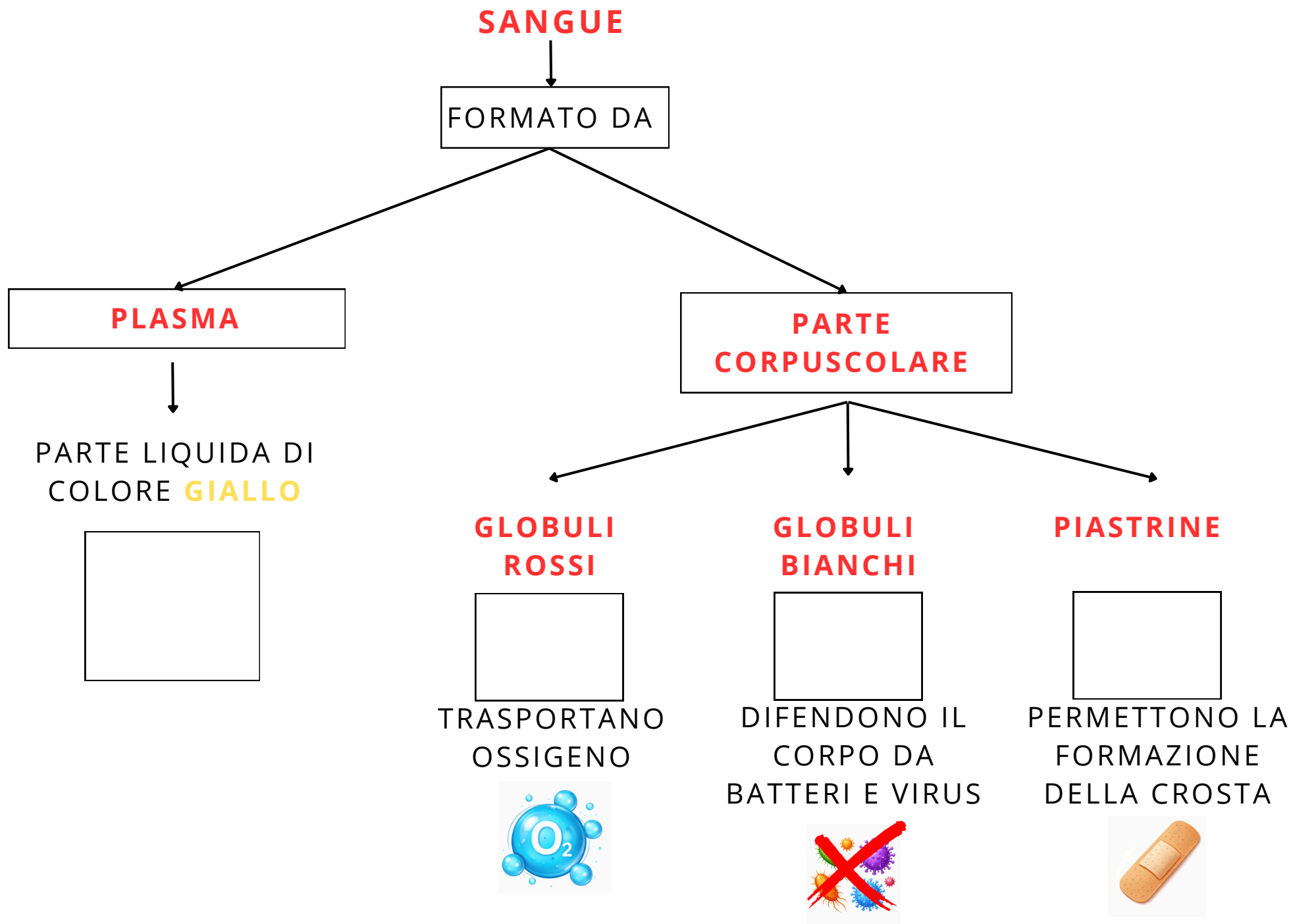
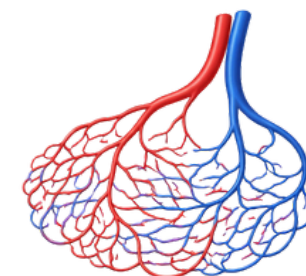
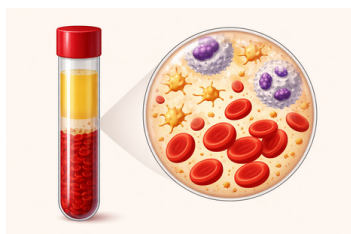
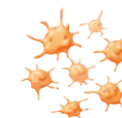
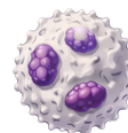
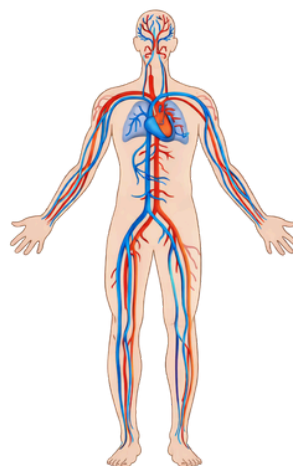


APPARATO CIRCOLATORIO



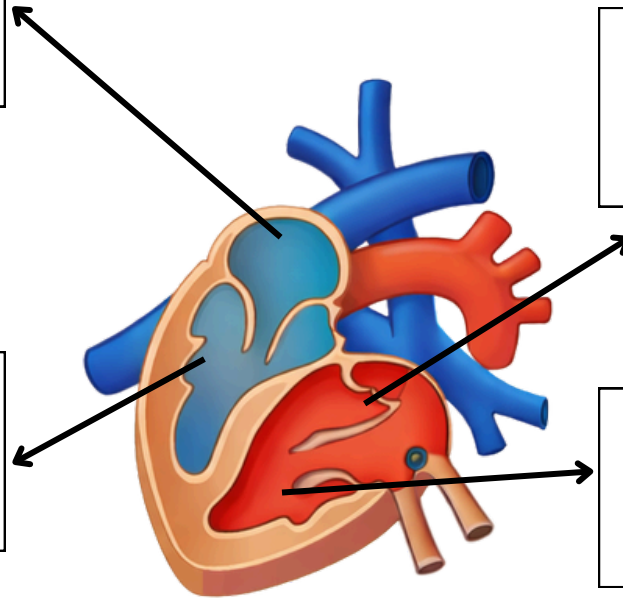




IL CUORE

SI TROVA NEL TORACE, TRA I DUE POLMONI.

E' GRANDE QUANTO UN PUGNO.



**VENTRICOLO
DESTRO**

**VENTRICOLO
SINISTRO**

**ATRIO
SINISTRO**

**ATRIO
DESTRO**

