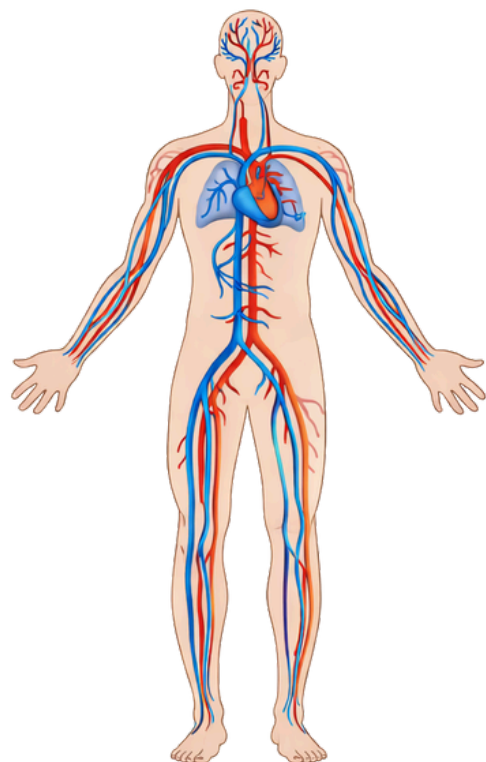


## APPARATO CIRCOLATORIO



FORMATO DA UN INSIEME DI CANALI  
DOVE SCORRE IL SANGUE.

IL SANGUE RAGGIUNGE TUTTE LE CELLULE  
DEL CORPO.



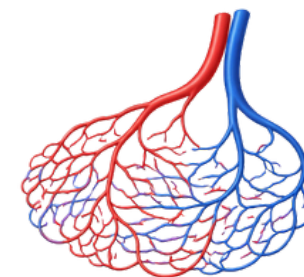
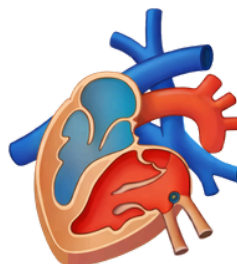
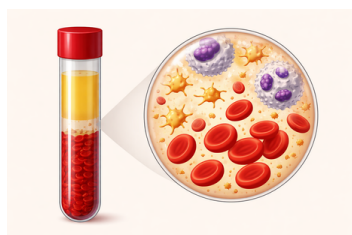
## APPARATO CIRCOLATORIO

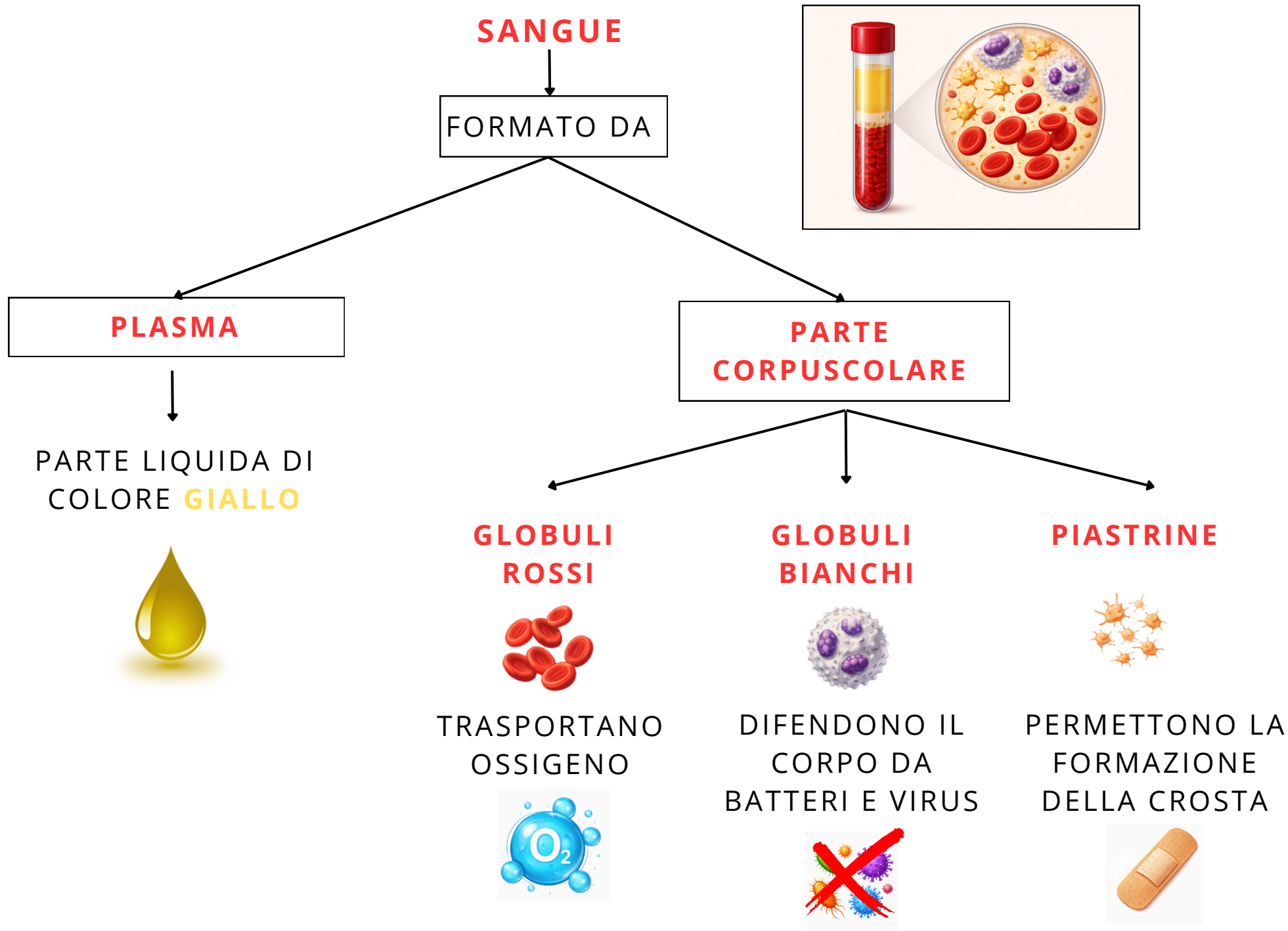
FORMATO DA

**SANGUE**

**CUORE**

**VASI SANGUIGNI**





## IL CUORE

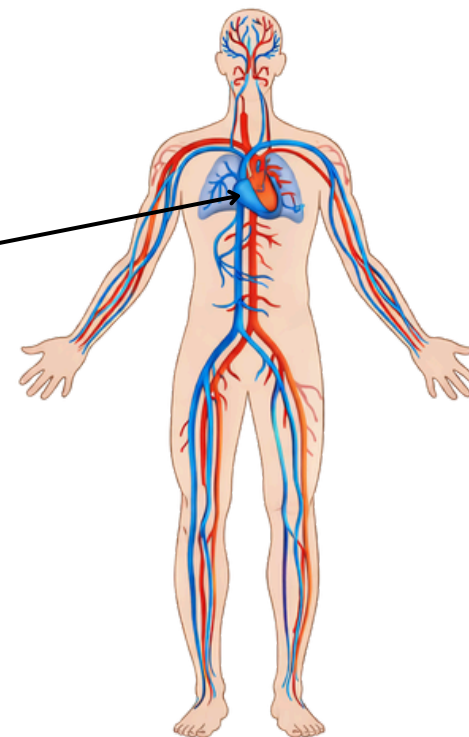
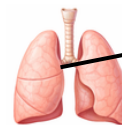


E' UN MUSCOLO **INVOLONTARIO**.

SI TROVA NEL TORACE, TRA I DUE POLMONI.

E' GRANDE QUANTO UN PUGNO. 

FA **MUOVERE IL SANGUE** IN TUTTO IL CORPO.



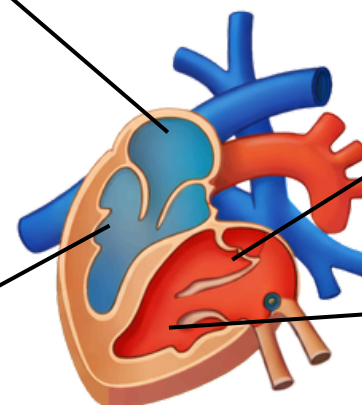
## IL CUORE

A SINISTRA  
SCORRE  
**SANGUE PIENO  
DI OSSIGENO**  
(PULITO)

A DESTRA SCORRE  
**SANGUE PIENO DI  
ANIDRIDE  
CARBONICA**  
(SPORCO)

**ATRIO  
DESTRO**

**VENTRICOLO  
DESTRO**



**ATRIO  
SINISTRO**

**VENTRICOLO  
SINISTRO**